

PDX1 Antibody
Purified Mouse Monoclonal Antibody
Catalog # AO1694a

Specification

PDX1 Antibody - Product Information

Application	WB, FC, E
Primary Accession	P52945
Reactivity	Human
Host	Mouse
Clonality	Monoclonal
Isotype	IgG1
Calculated MW	30.8kDa KDa

Description

The protein encoded by this gene is a transcriptional activator of several genes, including insulin, somatostatin, glucokinase, islet amyloid polypeptide, and glucose transporter type 2. The encoded nuclear protein is involved in the early development of the pancreas and plays a major role in glucose-dependent regulation of insulin gene expression. Defects in this gene are a cause of pancreatic agenesis, which can lead to early-onset insulin-dependent diabetes mellitus (NIDDM), as well as maturity onset diabetes of the young type 4 (MODY4).

Immunogen

Purified recombinant fragment of human PDX1 expressed in E. Coli.

Formulation

Purified antibody in PBS with 0.05% sodium azide

PDX1 Antibody - Additional Information

Gene ID 3651

Other Names

Pancreas/duodenum homeobox protein 1, PDX-1, Glucose-sensitive factor, GSF, Insulin promoter factor 1, IPF-1, Insulin upstream factor 1, IUF-1, Islet/duodenum homeobox-1, IDX-1, Somatostatin-transactivating factor 1, STF-1, PDX1, IPF1, STF1

Dilution

WB~~1/500 - 1/2000
FC~~1/200 - 1/400
E~~1/10000

Storage

Maintain refrigerated at 2-8°C for up to 6 months. For long term storage store at -20°C in small aliquots to prevent freeze-thaw cycles.

Precautions

PDX1 Antibody is for research use only and not for use in diagnostic or therapeutic procedures.

PDX1 Antibody - Protein Information

Name PDX1

Synonyms IPF1, STF1

Function

Activates insulin, somatostatin, glucokinase, islet amyloid polypeptide and glucose transporter type 2 gene transcription. Particularly involved in glucose-dependent regulation of insulin gene transcription. As part of a PDX1:PBX1b:MEIS2b complex in pancreatic acinar cells is involved in the transcriptional activation of the ELA1 enhancer; the complex binds to the enhancer B element and cooperates with the transcription factor 1 complex (PTF1) bound to the enhancer A element. Binds preferentially the DNA motif 5'-[CT]TAAT[TG]-3'. During development, specifies the early pancreatic epithelium, permitting its proliferation, branching and subsequent differentiation. At adult stage, required for maintaining the hormone-producing phenotype of the beta-cell.

Cellular Location

Nucleus. Cytoplasm, cytosol.

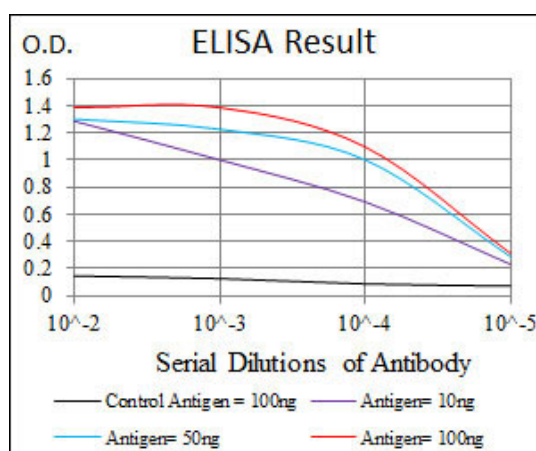
Tissue Location

Duodenum and pancreas (Langerhans islet beta cells and small subsets of endocrine non-beta-cells, at low levels in acinar cells)

PDX1 Antibody - Protocols

Provided below are standard protocols that you may find useful for product applications.

- [Western Blot](#)
- [Blocking Peptides](#)
- [Dot Blot](#)
- [Immunohistochemistry](#)
- [Immunofluorescence](#)
- [Immunoprecipitation](#)
- [Flow Cytometry](#)
- [Cell Culture](#)



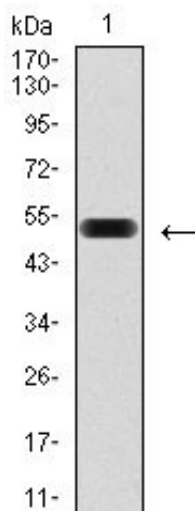


Figure 1: Western blot analysis using PDX1 mAb against human PDX1 (AA: 39-283) recombinant protein. (Expected MW is 52 kDa)

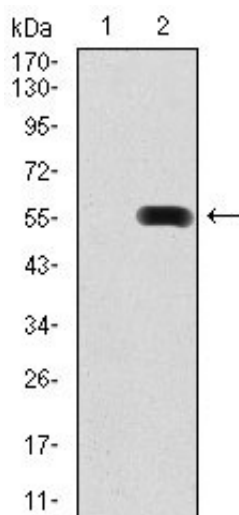


Figure 2: Western blot analysis using PDX1 mAb against HEK293 (1) and PDX1 (AA: 39-283)-hIgGFc transfected HEK293 (2) cell lysate.

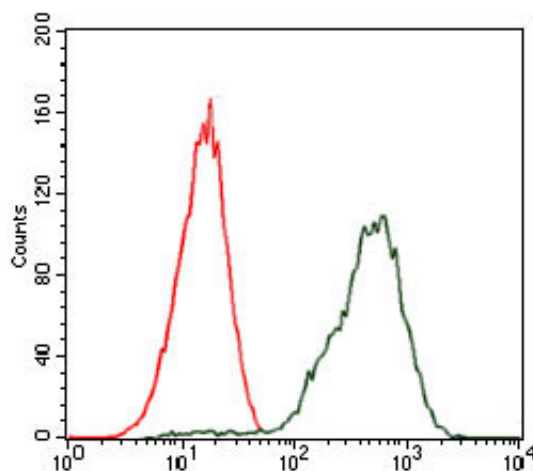


Figure 3: Flow cytometric analysis of Jurkat cells using PDX1 mouse mAb (green) and negative control (red).

PDX1 Antibody - References

Am J Clin Pathol. 2011 Feb;135(2):253-61. Pancreas. 2010 Aug;39(6):856-62.